



Published and printed by King Valley Learning Exchange Inc. (A0025713K) May 2016

## WHITFIELD PRIMARY SCHOOL MAJOR FUNDRAISER

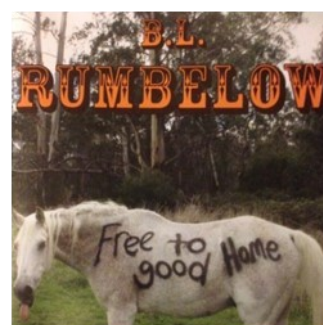
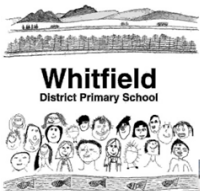


**MUSIC FUN FOR ALL. SUPPORT ACTS: B.L.RUMBELOW & SUZ CHRISTISON. FAMILY FRIENDLY TIME 5:30 – 9:30PM**

***SAL KIMBER IS ONE OF AUSTRALIA'S MOST EXCITING EMERGING SINGER-SONGWRITERS, NAMED BY ROLLING STONE MAGAZINE AS 'AUSTRALIANA ALT-COUNTRY AT ITS FINEST'***

TICKETS \$20 / \$60 FAMILY / \$10CHILD [www.trybooking.com/LDNV](http://www.trybooking.com/LDNV) or  
AT THE DOOR. INFO: CONTACT SUZ 0428298052

**DRINKS & BBQ DINNER FOR SALE = MAJOR FUNDRAISER FOR  
WHITFIELD PRIMARY SCHOOL**



**CLOSING DATE FOR  
NEXT ISSUE**

**25th of the month.**

Please lodge all articles before this

Contributions to this newsletter are most welcome & may be anonymous, your name and contact details would be helpful although these need not be published.

**Sponsorship Rates  
(GST inclusive)**

Single Col. (6x 8.5 cm) \$16.50  
Double Col. (12 x 8.5 cm) \$27.50

Feature (half page) \$38.50

Feature (full page) \$55.00

Classifieds \$5.50

Community Notices Free

Bonus insertion with six months prepaid advertisements

Submit contributions preferably by email - [kvle@people.net.au](mailto:kvle@people.net.au)  
Or leave articles at the Lodge.

If unattended slide article under door.

2533 Wangaratta/Whitfield Rd  
Moyhu, 3732

**Tel/Fax: 5727 9548**

Circulation: 1,300 copies per month delivered free to households in Moyhu, Myrree, Meadow Creek, Greta, Greta West, King Valley, Edi, Milawa Edi Upper, Whitfield, Oxley, Cheshunt, Whitlands, Carboor, The Grapevine is a non-profit project of the  
**King Valley Learning Exchange. Inc.**  
A0025713K

**Disclaimer**

The Editor and the KVLE accept no responsibility for the accuracy of statements contained in this newsletter. The views and opinions expressed in this newsletter are not necessarily those of the Editor or King Valley Learning Exchange.



**King Valley - Wangaratta  
Community Bus Service**

**TIMETABLE**

**Monday, Wednesday, Friday (Ex. Pub. Hols.)**

**Inward**

Cheshunt - Departs 9.50am  
Whitfield - Departs 10.00am  
King Valley -Departs 10.07am

Edi - Departs 10.15am

Moyhu - Departs 10.30am  
Wangaratta—Arrives 11.00am

**Outward**

Wangaratta—Departs 3.00pm  
Moyhu - Departs 3.30pm  
Edi - Departs 3.45pm  
King Valley -Departs 3.52pm  
Cheshunt - Arrives 4.10pm

**Coach Stop**

- Opposite General Store  
- Valley View Drive Whitfield  
- Corner Wang/Whitfield Road  
Honey's Lane  
- Corner Wang /Whitfield Road  
& Edi/Cheshunt Road.  
- General Store  
- Murphy / Reid Street

To make a booking call:

**5722 1843**

[wangratta@dysongroup.com.au](mailto:wangratta@dysongroup.com.au)

**Church Times**

**Anglican**

Greta— 1st/3rd Sunday 9am  
Moyhu— 1st Sunday 10.30am  
Milawa— 2nd Sunday 9.00am—  
Last Sunday 9am  
Followed by morning tea.  
Whitfield—1st Wednesday 1pm—3rd  
Sunday 11am

**Catholic**

Whitfield—1st Sunday 10.30am  
Moyhu— All other Sundays 10am

**Uniting**

Greta— 11am 2nd & 4th Sundays  
Whitfield- 10.15am 1st & 2nd  
Sundays

**Rainfall/ April 2016**

**Local Rainfall from Local Sources**

Location	(mm)	YTD
Moyhu		
Myrree	72mm	321mm
Redcamp	65mm	182mm
Whitfield	29.50mm	165.25mm
Whitlands	52.2mm	208.4mm

**Tai Chi for  
Health  
MOYHU - Tuesdays**



Regular Class 11am til 12 noon  
Cost \$5.00 Ph 5723 2000  
King Valley Learning Exchange  
Masonic Lodge  
2533 Wangaratta/  
Whitfield Road Moyhu  
Phone 57279548



**FIREWOOD  
FOR SALE**

Good quality dry wood.  
Call Des

**0429417548**

Wangaratta, Moyhu, Whitfield and



# SUPPORT THE LIONS BIGGEST BARBEQUE AT THE MOYHU FARMERS MARKET Saturday 21st May 2016

Coffee, Breakfast, Plants, Fruit & Vegetables, Preserves,  
Bread, community stall, Men's Shed, and lots more.

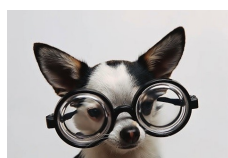


Since 1996, Lions Australia has shown outstanding commitment contributing over \$5 million to childhood cancer research. This effort has resulted in, amongst other things, safer and more effective blood stem cell

We Believe  
every child  
deserves a chance  
at a healthy life



transplantation for leukaemia patients following chemotherapy which can lead to shorter hospitalisation and more rapid recovery. Lions have done a lot but the job is not over because we believe every child has the right to a healthy life. .



## Lions Eyesight



Lions Eye Health Program (LEHP) is a community based program that aims to prevent vision loss and blindness by promoting early detection and timely treatment of eye diseases.

The program encourages people to visit an eye care professional. The program was launched in Australia in 2000 and since that time more than 60% of all Lions Clubs in Australia have undertaken some type of LEHP promotion

**Wondering what to do with your used eyeglass frames?**

**Don't throw them away.**

Donating eyeglass frames is an easy way to help people who can't function normally because they can't see well.

Glasses can be left at the Moyhu Lions van at the monthly Farmers Market, The Old Bank and the King Valley Learning Exchange.



## KING VALLEY COMMUNITY MEN'S SHED

Meet every Tuesday at  
2533 Wangaratta Whitfield  
Road Moyhu  
Next to Moyhu Masonic  
Lodge & King Valley  
Learning Exchange  
9am—4pm  
Come along and share  
skills, ideas or  
just a cuppa & chat.

ALL WELCOME  
Enquiries—King Valley  
Learning Exchange  
57279548

Email [kvl@people.net.au](mailto:kvl@people.net.au)



## Green Thumbs Garden Group

On Wednesday April 13th we went to Lindy and Matt Roberts beautiful alpine garden at Upper Rose River. The magnificent 1927's homestead is surrounded by a park of deciduous trees of varying ages. Some are known to be 40 years old, and some are much older. Recent plantings include Portugese Laurels, espaliered fruit trees and a productive vegetable garden. Garden ornaments included wire pears and a serviceable and decorative garden seat made solely from discarded horse shoes.

Thank you, Matt and Lindy for a lovely morning.

On Thursday June 9th we go to Kath Whites at 357 Oxley—Greta West Road. Turn left off Wang—Whitfield Rd onto Alexanders land and left again onto Oxley Greta West Road.

We meet a 10am and everyone is welcome.



Do you need  
the services of a  
Justice of the Peace ?  
The local J.P. in our area are:  
Neil Sheppard 5729 8311  
Whitfield Rd, Whitfield



## **KING VALLEY ART SHOW PRESS RELEASE 2016**

The King Valley Art Show is on again on the Queen's Birthday weekend, 11-13 June 2016.

This will be the 19<sup>th</sup> show and the record amount of prize money on offer (\$15,750) and the reputation of the Art Show will ensure that artists from near and far are willing to display their work.

It is anticipated that more than 300 entries will once again vie for space at the King Valley Cucina 4515 Wangaratta-Whitfield Rd King Valley.

The Gala Opening, always a highlight of the King Valley social calendar, will be on Friday 10 June from 7.30pm. It is always a well-patronised event and early bookings are encouraged, as numbers will be limited. The judge's decisions will be announced while you sip a glass of local wine and nibble delicious canapés provided by the parents of Whitfield Primary School.

This year's judge is Dianne Mangan, a well-known local who has had significant experience as an artist and arts administrator. Dianne has had a leaning towards abstract work in her own practice, but also has a keen observational sense that has developed during a lifetime surrounded by artistic endeavour.

Dal Zotto Wines are once again generously sponsoring the Grand Winner prize of \$3,000. Other sponsors include Hargraves Secured Investments, King River Estate, Eminence Wines, Chrismont, Boonderoo Farm, Casa Luna Gourmet Accommodation, Pizzini Wines, Ovens and King Builders, Domaine Chandon, RBA Financial Group, Brown Brothers, King Valley Tourism Association, Wangaratta Art Gallery, and Dyson Group.

The Friends of the Art Show continue to grow in number and this year will contribute to several non-acquisitive awards. These awards are very attractive to artists and help ensure that the tradition of a wide-ranging and engaging show is maintained.

The Art Show will be open throughout the weekend from 10am – 5pm; cost of entry is \$3 (children free). For more information and bookings visit [www.kingvalleyartshow.com.au](http://www.kingvalleyartshow.com.au)

Entries for the show will be accepted until 23 May – details and an entry form are available at the website or by phoning 5766 2345.

### **WANTED**

#### **NEWS AND ARTICLES OF INTEREST**

Submit contributions preferably by email -

[kvlc@people.net.au](mailto:kvlc@people.net.au)

Or leave articles at the Lodge - If unattended slide article under door.

2533 Wangaratta/Whitfield Rd., Moyhu, 3732

## **WITHNELL & CO** **SOLICITORS**

29a Camp Street | PO Box 202  
Beechworth VIC 3747

t. 03 5728 2400

f. 03 5728 2066

e. [admin@withnellandco.com.au](mailto:admin@withnellandco.com.au)

w. [www.withnellandco.com.au](http://www.withnellandco.com.au)

### **FLETCHERS' WEED/AWAY**

#### **Blackberry & Noxious Weed Control**

**0357 295511 or 0427852925**

#### **Spraying and Management**

solutions for problem weeds and infestations of : - Blackberry, St Johns Wort, Gorse, Broom, Hawthorn, Chilean Needle grass, Paterson's curse and others, in pasture, on property, roadside or range

#### **King and Ovens Valley**

Licensed and ticketed local operators  
DPI accredited and OH&S compliant  
using the most effective means for your solution and budget

Prompt reliable service

Free no obligation/quotation /  
consultation and appraisal

**call Bruce or**

**Email [flekka@westnet.com.au](mailto:flekka@westnet.com.au)**

**ACJ**  
Engineering

Call **Allen Jones**  
**0403 654 390**  
**Ph: 03 57 279 168**

Email: [allen-](mailto:allen-jones2@bigpond.com)

[jones2@bigpond.com](mailto:jones2@bigpond.com)

201 Top Plain Rd Moyhu 3732

For all your: Fitting, Turning, Welding,  
Machining, Fabrication and repairs to  
Industrial & Agricultural equipment,  
Hydraulic repairs.

Over 15 years experience, call or  
email for a free quote.



Moyhu Licensed  
Post Office

**Phil & Patrice Lar-  
kin**

**Byrne Street  
Moyhu 3732**

**Ph/Fax: 5727 9260**

Pay your bar-coded service accounts here  
(Telstra, Optus, TXU, NE Water, Vic  
Roads, ATO, RCoW rates, RACV etc)  
Also City passes & Phone cards

Selection of greeting cards  
Small selection of stationery  
(copy paper, fax rolls, envelopes)



# King Valley Art Show

**QUEEN'S BIRTHDAY  
WEEKEND  
11 - 13 JUNE 2016**

View over 300 artworks  
by local, intra and interstate  
artists, crafted in a diverse  
range of mediums and styles



**exhibition open:  
10am - 5pm  
adults \$3**

**gala opening:  
Friday 10 June, 7.30pm  
tickets \$28 (all inclusive)**

Join our judge  
Dianne Mangan when she  
announces the winners.  
Savour premium King Valley  
wines and delicious canapés.

**KING VALLEY CUCINA  
4515 Wangaratta-Whitfield Rd  
BOOKINGS:  
[www.kingvalleyartshow.com](http://www.kingvalleyartshow.com)**



**HARGRAVES**

Boonderoo Farm



## FRIENDS OF THE KING VALLEY ART SHOW

- La Cantina Wines
- King Valley Walnuts
- Darling Estate Wines
- Red Feet Wines
- Mark & Jenny Judd
- Tony & Jill Judd
- Marg Swan
- Sally Judd
- Julie Ritchie
- Mountain View Hotel
- Warby Street Veterinary Hospital
- Gentle Annie Caravan Park
- Wendy Wilson & Mick McInerney
- Seed & Bloom Flower Store
- King River Brewing
- Whitfield Garage
- Whitfield General Store
- Whitty Cafe

image: Kate GORMAN, *Evening at Black Range* (detail), 2015, 101 x 101cm, acrylic on Belgian linen

**ALLAN  
EVANS**



**AGRICULTURAL  
CONTRACTOR  
KING VALLEY**

- HAY CUTTING, RAKING,  
BALING & WRAPPING
- SUPPLY & SPREAD BULK LIME,  
GYPSUM & FERTILIZER
- DIRECT SEED DRILLING
- COMPLETE PASTURE HUSBANDRY
- SALES - HAY & SILAGE  
LUCERNE & GRASS  
PH/FAX: 03 5729 3520  
0427 202 324



## FORGE'S TRANSPORT

**Livestock & General  
48 ft Truck & Trailer,  
Semi & Tray Trucks**

**CONTACT: IAN  
Mobile 0427 573 551  
Phone/Fax:  
(03) 5729 3597**

## TRENCHER For HIRE

Robert Gaspari  
Ph: 03 5729 8228  
0428 698 978  
No job too small





## R&J EXCAVATIONS

WE CREATE YOUR DREAMS  
IN A TIMELY AND COST  
EFFECTIVE MANNER

- TIP TRUCK & TRAILER
- BOBCAT
- EXCAVATOR 4.5T & 20T
- GRADERS
- VIBRATING ROLLER
- POST HOLES
- SLASHING
- AUGERS UP TO 900MM
- TRENCHER
- FLOAT HIRE WIDENING  
DROP DECK



## QUARRY SUPPLIES

- SOIL • GRAVEL • SAND
- PINEBARK • WOODCHIPS
- SAWDUST

CALL  
RUSSELL JONES

0407 558 584

5725 1710

## BASIC COMPUTER CLASSES



## \*FREE TO CULTURALLY AND LINGUISTICALLY DIVERSE COMMUNITY MEMBERS



3 THE CLOSE  
WANGARATTA 3677  
(OFF OVENS STREET)

Phone: (03) 5721 2090  
Email: ben@nema.org.au

North East Multicultural Association (NEMA) - will be offering \*Free Basic Computer Classes to Culturally and Linguistically Diverse Community Members.

Topics covered will include: *basic computer use, creating letters, photo management and internet and email use*

NEMA is looking to recommence sessions in 2016

Bookings are essential — Please contact Ben Flanigan on (03) 5721 2090 to reserve a place or for more information

\*A gold coin donation for each session would be appreciated to go towards morning tea and printing costs

## Here's Where You Go!!

For your general plumbing,  
roofing  
Gas fitting and  
maintenance

DAVE JAMES  
Plumbing

2 Bartley Street.  
Moyhu 3732  
Ph/Fax 03 5727 9417  
Mobile 0428 573 516  
Lic No. 33052



## WHITLANDS ENGINEERING Your local specialist manufacturer of:

**Whitco | Vineyard Pruning  
Equipment**

Specialising in hedging Systems and Cane Rakes, Whitco Vineyard Equipment gives you the extra edge in productivity and canopy management.

[www.whitcovequip.com.au](http://www.whitcovequip.com.au)

**SUPERAXE  
WOOD SPLITTER**

Australia's toughest hydraulic wood splitter. Designed and manufactured in Whitlands, the Superaxe is setting new standards in performance, design and safety

[www.superaxe.com.au](http://www.superaxe.com.au)

234 Burders Lane, Whitlands, 3733

0357 297 577

[superaxe@superaxe.com.au](mailto:superaxe@superaxe.com.au)

## ELECTRICIAN

ON CALL 24/7

PROUDLY SERVICING THE KING VALLEY

Specialising in:  
Breakdowns/Emergencies  
New Homes  
Renovations/Re Wires  
Ovens/ Hot water Systems

STEVE CRAWFORD  
MOBILE: 0438 342 654

EMAIL: [tarrawallafarm@live.com.au](mailto:tarrawallafarm@live.com.au)

TARRA ELECTRICAL SERVICES  
REC: 19539 ABN: 90 669 318 128



## Are you interested in learning how to cook foods from other countries

Each month Pangerang Community House & North East Multicultural Association are hosting cooking classes that will be led by our communities multicultural members. You will be shown how to prepare, cook & try traditional foods.

Dates for term 2—2016

**Thursday 26th May—Italian**

Time: 6.00pm

Cost: \$8.00 per person

**Thursday 23rd June—French**

Time: 6.00pm

Cost: \$8.00



*We care about your rights*  
DAIS provides individual advocacy and information to people with disability, their carers and families in the King Valley.

DAIS aims to protect and uphold the rights of people with a disability.

**THIS IS A FREE SERVICE**

DAIS representatives are available to visit on request.

Phone DAIS to make an appointment

02 6056 2420 or 1300 886 388.



COME ALONG TO

## Our "Slice themed" Morning Tea

AND RAISE MONEY FOR CANCER RESEARCH

Pangerang Community House, N.E.M.A & Angicare invite you to join us for our "Slice Themed" Morning Tea

Bring along your favourite slice to share and for those willing to "bake" their own there will be the opportunity to enter a special "taste off" and win some special prizes.



**When:** Wednesday 25th May 2016

**Where:** Angicare – Armstrong House, Owens Street Wangaratta

**Time:** 10.00 am – 11.30 am

**Donation:** Gold Coin

**RSVP by Tuesday 23rd May**

Tea and coffee provided.

# KEAM FERTILISERS

• SALES • SPREADING • TRANSPORT

**Luke Keam**  
0408 500 361  
Milawa

- Lime & Gypsum
- Granulated Fertiliser
- All your Bulk Fertiliser needs covered from Sales to Spreading & Cartage
- 48ft Drop deck with heavy duty ramps haulage capabilities
- Bulk Grain Cartage



A free programme providing basic computer training.  
Wednesday Mornings  
For bookings or for more information contact

**King Valley Learning Exchange on 57279548**

Once a month an experienced tutor in researching your family tree will attend to give assistance to those wishing to explore their Family Tree.

Contact the Learning Exchange for dates and times and to book in.



**We offer a range of health services including :**

- **Aged Care Assessment Service**
- **Podiatry**
- **Counselling services**
- **Alcohol & Drug Support**
- **Women's Health**
- **Centrelink Access Point**
- **Community Nursing**

## **MEDICAL PRACTICE**

**Male and Female GP's  
Bulkbilling**

**Monday - Friday  
Located in Wangaratta &  
Wodonga**

**By appointment**

**Wangaratta: 5723 2000**

On days of declared Extreme conditions, staff that provide home visiting services to districts may need to contact you to make alternative arrangements.

On these days you will determine your care needs. If you have planned to leave your home early on extreme heat days please let your service provider know. Not all services are offered at both Wangaratta and Wodonga Centres.

Please call us to find out more or visit

[www.gatewayhealth.org.au](http://www.gatewayhealth.org.au)

**Women's Sexual Health Clinics** – For information please phone -5723 2000.

**Gateway Health District Nursing** - phone 5723 2000

Delivers a range of clinical nursing services to residents of the King Valley who are frail aged, carers or disabled. These services include Domiciliary or home based nursing and Nursing Clinic in Whitfield. DN also provides home and clinic based nursing services to people eligible under the Post Acute Care, Hospital in the Home, Palliative Care, Department of Veteran Affairs, TAC & Workcover.

**Podiatry Service** - phone 5723 2000 for appointment  
Concession card holders may be eligible for reduced rates.

**Tai Chi** is on Tuesday mornings at Moyhu. Phone 5723 2000 for further details.

**Active Rural Communities (ARC) Phone 5723 2000**

The ARC program provides social time and activities for older people, younger people with a disability, and their carers. Catching up with old friends and making new friends helps them to continue to enjoy living at home and in the community.

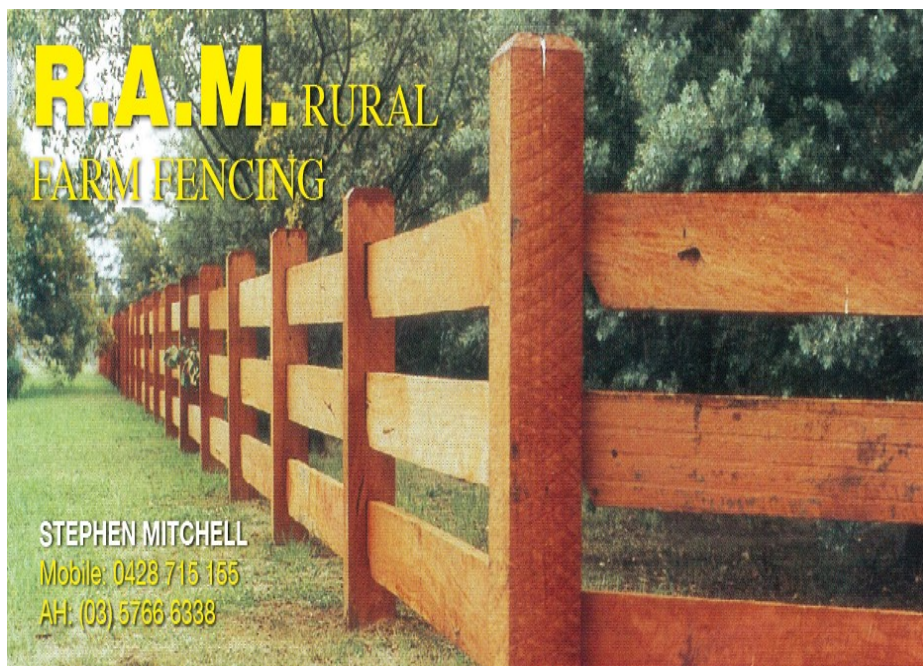
**Strength for All Don't Fall gentle exercise program** is also available on Tuesday, Wednesday and Thursday for all community members as part of the ARC program at Moyhu.

**Volunteering** – For more information on volunteering opportunities call : Gateway Health on 57 23 2000.

## **MOYHU ARC**

**Thursdays:** Bus leaves Moyhu 9am

For Wangaratta for seniors who want to do shopping. The bus returns to Moyhu at 3.30pm



**R.A.M. RURAL  
FARM FENCING**

STEPHEN MITCHELL  
Mobile: 0428 715 155  
AH: (03) 5766 6338

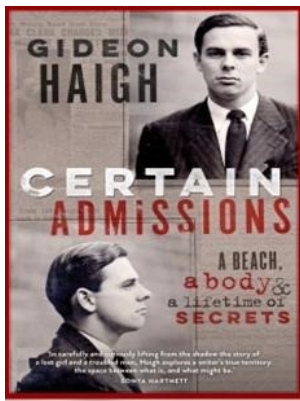


**Pioneer  
WaterTank**  
*Built stronger to last longer.*

Zincalume or Colourbond steel  
12,000 - 247,000 Litres  
Australian Made watertank with  
Australian Made liner  
Prices include supply, delivery  
and onsite installation  
20 year conditional warranty  
[www.bluescopewatertanks.com.au](http://www.bluescopewatertanks.com.au)

**Quentin White & Co.  
Plumbing and Gasfitting  
0407 90 36 37**

**AUTHORISED  
DISTRIBUTOR FOR  
BLUESCOPE  
WATER TANKS**



Meet

## Gideon Haigh

author, journalist, editor  
& cricket commentator

Gideon Haigh has written more than thirty books, with many on the subject of cricket and writes about the sport for *The Australian* and *The Times*.

Gideon's latest book, *Certain Admissions*, is Australian true crime at its best.

**Wangaratta Library**

**Wednesday 18th May 6:30pm**

Bookings essential: 5721 2366 or at Wangaratta Library



## BOOK SWAP

**Sun. 15<sup>th</sup> May :**

**Bookswap**

(+ some plants for sale)

**9am - 1pm**

**The King Valley Community Memorial Hall Whitfield (old RSL)**

Swap, borrow, browse or just chat.

Ph. Ange 5729 8344



## 2016 FOLK ART/ DECORATIVE PAINTING

Classes

**Monday 9.30am & Thursday 9.30am**

Take time out and enjoy painting with Nola Jones at  
"GUMDALE COTTAGE" Moyhu. **57279295**

Cost is \$15 per session.

Come and pick up a paintbrush and be amazed at what you can do. For the first six weeks, Nola will supply the paints, but brushes will need to be purchased.

Classes will be ongoing for interested students.

This course aims to give a variety of styles of painting and to provide basic skills

e.g. back-ground; preparation; design; colour mixing; brushstrokes; finishing etc. and "CONFIDENCE".

Feel free to ring and enquire about classes.

## TRASH & TREASURE

**AT**

**WHITFIELD HALL**

**ON**

**Sunday, 12th June 2016**

**FROM**

**9am—1pm**

Stall Cost = \$5.00

(Set up from 8am)

Stall holders must provide their own tables and chairs.

**You can book by phoning**

**Pam 0407 853 043 or Ange 5729 8344**

**Or just turn up!**

DONATIONS of items for the "Hall-stall" can be collected by Contacting Ange - all proceeds from this stall are for the Hall upkeep and maintenance.



## Nature's Touch Therapeutic Massage

**Sammy**

**Rumbelow**

**0478068852**

**AH 03 5729 8087**

[sammymassage@gmail.com](mailto:sammymassage@gmail.com)  
[www.naturestouchtherapeuticmassage.com.au](http://www.naturestouchtherapeuticmassage.com.au)

**Melissas'**  
**Hairdressers**  
**NOW OPEN IN**  
**WHITFIELD** next to the  
**Garage**

**Fully qualified**  
**hairdresser**  
**of 16 years.**

Will cater for both men and women, as well as children.

**Open from Wednesdays to**  
**Fridays from 9am—5pm**

**Saturday's by**  
**Appointment only**

For appointments please call

**Melissa on 0448689511.**



## THE "ALPINE RETREAT YURT"

Unique accommodation in a Mongolian Yurt tent decorated in traditional style with magnificent views situated in a vineyard

Also used as a beauty salon offering the following treatments:

**Massage,**  
**Reflexology**  
**Manicure/Pedicure**  
**Facials**  
**Waxing**

Situated in Evans Lane Myrrhee Ring Sharon for an appointment and price list

**On 57297579**





# Volunteer Skillsbank



Volunteering can change your world and someone else's,  
if you want to make a difference contact us.

- **Get involved!**
- **Meet new people!**
- **Have fun!**
- **Do something important!**

Find out more by contacting the  
Volunteer Skillsbank today!



## VOLUNTEER SKILLSBANK

Chisholm Street, Wangaratta 3677 Ph: (03) 5721 0258

E: [csb@thecentre.vic.edu.au](mailto:csb@thecentre.vic.edu.au) [www.thecentre.vic.edu.au](http://www.thecentre.vic.edu.au)

TOID 4172

### **BEBB PROPERTY REPAIRS & MAINTENANCE**

- General Home Maintenance
- Wall Patching
- Window Door & Lock Repairs
- Painting & Carpentry
- No Job Too Small
- Professional, Reliable Service
- Fully Insured

**Phil 0478 364 841**

## **JENVEY TRANSPORT**

65-67 Bartley Street, Moyhu, 3732

**Livestock &  
All General Cartage**

**Mobile: 0429 306 679**

**Phone: 03 5727 9419**

**Semi, Tray & Tipper Trucks available  
Water deliveries also available**



## Greta Valley Landcare Group – May News

**We have funding to protect scattered paddock trees** in our catchment through fencing and providing native tube stock to establish understorey shrubs. We are looking to identify 50 large paddock trees through this first round of funding and also protect approx. 60 young trees. Paddock trees will be selected based on their health and their proximity to blocks of nearby native vegetation. Please contact Sally Day if you are interested in being a part of this fantastic initiative.

**Farm Chemical Users (full/refresher) & 1080 bait training Courses.** Did you know your Farm Chemical Users course requires a refresher after 5 years? You will also need this training if you wish to acquire an ACUP (Agricultural Chemical User Permit) for use of restricted supply or restricted use chemicals. Our Group has funding to provide this training at a heavily subsidised cost through GOTAFE. Training will be run over two days for the full course, or one day for the refresher. Training held locally in Moyhu on two Sundays during July (date to be advised). Each participant will be required to pay just \$50 towards course cost (usual fee is \$200-\$300 depending on course type), lunch included. Please ring Sally ASAP to register for this course, as we are limited to a maximum of 25 participants.

**For all bird watching enthusiasts!** The Swamps, Rivers and Ranges Project are funding the setup of 10 long-term bird monitoring sites across the Greta Valley. The sites will be initially set up by Chris Tzaros, who is an accomplished wildlife ecologist and bird photographer. We are looking for interested community members to help with the monitoring program. There will also be a short discussion about the impacts of Indian Myna birds and demonstration of new our Myna traps. Planned meeting at the Moyhu Memorial Hall on **Friday the 17<sup>th</sup> of June at 7.30pm**, supper provided. Contact Stephen Routledge at [rout@netc.net.au](mailto:rout@netc.net.au) for more information.

**Don't forget that now is the time to control your Blackberries** and undertake **Rabbit** control, including baiting or fumigation. Following some rain, it will also be a suitable time to rip any warrens on your property.

**Our next meeting** will be held on Wednesday the 1<sup>st</sup> of June from 7.30pm at the Greta South primary school. Visitors to our meetings are warmly welcomed. Come along to hear about some of our latest projects and planned events.

For more information contact Mary Anderson (Secretary) on 0438 537 462 or [greta.valley@landcarevic.net.au](mailto:greta.valley@landcarevic.net.au) or Sally Day (Project Administration Officer) on 0437 136 162 or [sally.day@landcarevic.net.au](mailto:sally.day@landcarevic.net.au)



**EARTHMOVING**  
And  
Laser Landforming  
Driveways, Roadworks, Drainage, Dams,  
Gravel Supplies  
Contact  
**MARK BAKER**  
0428577269



# HAVE YOU BEEN AFFECTED BY CRIME COMMITTED IN VICTORIA?



The Victims Assistance Program (VAP) at Gateway Health can assist you, your family and anyone else who has experienced or witnessed a violent crime.

## VAP can support you with:

- > information and practical assistance with criminal justice tasks (both reported and unreported crime)
- > your day to day needs
- > communicating with Police
- > getting ready and attendance at court
- > referral to other services - solicitors, medical, counselling
- > applying for financial assistance to the Victims of Crime Assistance Tribunal (VOCAT)

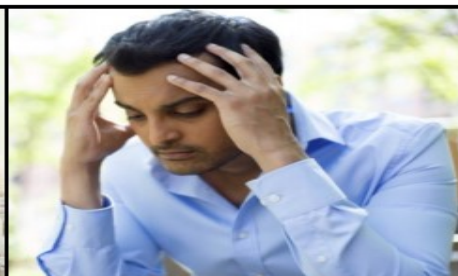
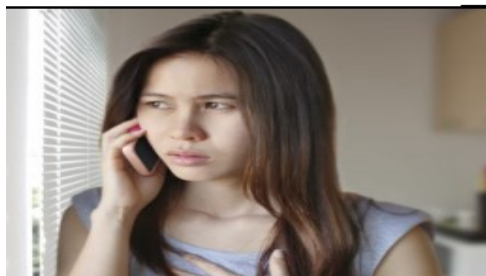
Eligibility criteria applies

Victims Assistance Program is a **free service**

For support across the Hume Region call

**Victims of Crime Helpline 1800 819 817**

[www.victimsofcrime.vic.gov.au](http://www.victimsofcrime.vic.gov.au)



### MOTOR TRIMMER

All Automotive Upholstery Work

- Hot Rods
- Custom Trim
- Vintage Hoods
- Headlining
- Ute Tonneaus
- Custom Carpets
- 4 x 4 Canopies
- All Marine Trim
- Caravans

Ph: (03) 5727 6156

Alan Black  
970 Moyhu-Hansonville Rd.,  
Hansonville, Vic. 3675

### MANSFIELD EXPRESS

Daily General &  
Refrigerated freight service  
To the King Valley

From:  
All Melbourne Suburbs +  
Shepparton, Albury, Mansfield

Your driver: 0428 582 201  
Mansfield Depot:  
0408 577 800  
FAX: (03) 5775 1643



### Phil Hogan



Qualified Guitar  
& Music Tutor

*20 Years Live Band Experience*

*Diploma of Music*

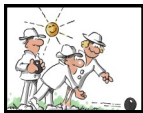
*10 Years Teaching*

*Guitar, Bass and Drum*

*Lessons Available for Children  
to Adults*

*Guitar Maintenance also  
available*

Phone: **0429 898409**



## MOYHU BOWLS CLUB NEWS



### Card Results

**Thursday 14th January** — Winners—Lorna Martinelli & Neil Magee  
Competition—Ross Smith

**Thursday 21st January**—Winners Dot Baker & Ross Smith,  
Competition—Helen McDonald & Dot Baker

**Thursday 28th January-** Winners, Lorna Martinelli, Gordon Porter,  
Competition— Fed Baker & Betty Bennett

**Friday 4th February**— Winners Elaine Smith & Tige Bussell,  
Competition—Angie Delaine & June Larkin

**Friday 11th February**— Winners Dot Baker & Chris Scholl,  
Competition—Jim Watkins

**Friday 18th February**— Winners Helen McDonald & Lyn Northey,  
Competition—Betty Bennett

Series Winners, Dawn Dent & Tige Bussell

Our weekend pennant finished their year just out of the four. Our mid-week pennant had a mixed season until the last wee, we were in forth place with one game to go and we went down to a very experienced team in Club Mulwala who finished in second place. We hope to do well again next season. Was a good effort to finish just out of the four. Our euchre card games are starting every Tuesday @ 12 o'clock. If anyone would like to come along you will be most welcomed. For more information phone: Max Baker 5727 9376 or Christine Magee 5722 2312.

## \$10 Gift Voucher Greta Valley Pottery

Use this voucher as a \$10 note to buy anything we have in stock. Limit of one per customer.

No minimum purchase requirement. Just bring this voucher with you.

We have gifts for every budget & every occasion starting from less than \$10!

Open Friday-Monday  
**Cathy Oddie**  
**0427 449 334**  
**1140 Wangaratta**  
**Kilfeera Road**  
**Greta**

### MAKE A DIFFERENCE IN THE LIFE OF A CHILD

Every day, foster carers with Upper Murray Family Care make an incredible difference by providing safe and caring homes to children who are unable to live with their own families. Foster carers come from all walks of life, backgrounds, ages and experiences. Foster carers can be single, married or partnered, they may own their own home or rent, they work in or away from their homes, some have children some don't.

#### HOWEVER!

With over 60 children in care in our region on any one night, we are always looking for more carers! The children aged from birth to 18 years cannot live with their families for all sorts of reasons. Some stay in care for only a few nights, others a few weeks and some can live with loving carers for months or years. Carers can specify the type of care and age range that would fit best with their lifestyle and commitments. Some of our carers provide respite care on one weekend a month, while others prefer to deal with emergency or short term placements. The choice is yours.

Foster Care does have challenges and isn't always easy, but training and 24 hour support are available. Carers also receive a non taxed reimbursement to cover the additional costs of caring for a child. Our carers tell us that the good times far outweigh the tough, and their lives are enriched as they help a child move toward reaching their potential.

If you would like to find out more about becoming a foster carer with Upper Murray Family Care, feel free to contact Jeanine on 02 6055 8042 or [jaughey@umfc.com.au](mailto:jaughey@umfc.com.au) or see our website [www.umfc.com.au](http://www.umfc.com.au)





## CHILDRENS SERVICES

### WHITFIELD COMMUNITY CHILD CARE CENTRE

Main Rd Whitfield Vic 3733  
ph: 0427 298 387

Professional staff; High Quality  
Program, Positive & involved parent  
group; Happy Smiling Kids!

Ring now to find out more about our  
fantastic service.

Under 3 and Over 3 positions.

Thursdays 9:00am -3:45pm

CCB & CCR approved.

Enquiries please call  
Bookings Officer

Petra Seebacher

0401 450234



**King Valley Playgroup**  
Wednesdays 10am—12noon  
Please join us for fun,  
activity, friendship &  
conversation.

Alternating one week:  
Coffee, Kids and Play  
At Gracebrook Vineyard  
And the other week:  
Music, creative activities,  
shared morning tea at the  
Whitfield Community Health  
Centre.

Enquiries:

whitfieldcommunitychildcare@gmail.com

**Moyhu & District  
Pre-School**  
Occasional Care Program  
Friday 9am — 2pm  
Places available for under 3  
and over 3 year olds

- experienced, qualified carers
- safe, nurturing environment
- structured programs to enhance  
skills & social development
- quality Pre-School facilities

play - fun - learn

To book or for more information call  
Moyhu Pre-School (03) 5727 9346 or  
Dianne 03 5727 9574

Bookings Essential

• Community Transport • Volunteer Friends Program • Getting THERE Network



## Volunteers Needed... Community Arranged Ride Program (C.A.R)

### Helping others with getting places!

The aim of this program is to provide transport to community members who are located in areas with limited or no taxi service and with limited or no access to community or public transport; including the areas of the King Valley, Whitfield, Whitlands, Edi, Cheshunt and surrounds.

Transport is provided by local community volunteers, using their own vehicles. Volunteers are reimbursed the per kilometer rate for the use of their vehicle in providing this service. This rate is calculated to cover the cost of insurance, registration, maintenance, fuel and general wear and tear to the vehicle.

If you would like to be a part of this fabulous new program or you would like more information please contact Bridget on 03 5721 3045 (ext 22) or email

[amwang@ca-network.org.au](mailto:amwang@ca-network.org.au)

### QUENTIN WHITE & Co.

Plumbing and Gasfitting  
Your local and authorized  
distributor and installer of  
Highline and Pioneer Water  
Tanks throughout  
Regional Victoria.

Gross Capacities of 12,000 to  
367,831 Litres

ZINCALUME® or

COLORBOND® Steel

Up to 20 years conditional warran-  
ty

Authorised Distributor



Authorised distributor



### GINO'S AUTOMOTIVE MOYHU

GINO & MARLO CAVICCHI-

SERVICE & REPAIRS  
ALL MAKES & MODELS

SPECIALISING IN  
FORD VEHICLES

DISK & DRUM BRAKE  
MACHINING

(03) 5727 9223

### COREY'S CABINETS

Qualified Cabinetmaker  
Specialising in:-

- Kitchens
- Wardrobes
- Vanities
- Laundries

72a Meadow Creek Hall Road  
MEADOW CREEK VIC 3678

Call Corey Sloan  
On

0427 270410 - (03) 57279179

## Autumn Garden Party with Inspiring Speakers

Milawa Primary School Parents & Friends committee are hosting another high quality school fundraiser; A *Rustic yet refined Autumn Garden Party* Sunday May 15th 2pm—4.30pm at Milawa Mustards, Local leaders Janelle Boynton and Julie Tyler will speak and guests will enjoy an array of food and live music by Billie Taylor.

In line with the schools health and wellbeing focus attendees will be treated to hearing from two speakers; Janelle Boynton of Feathertop Wines and Julie Tyler of Women's Health Goulburn Murray. Both speaker will share their story and provide insights and tips on community engagement and managing a healthy work life balance.

The event will be held at the historic **Milawa Mustards, 1597 Snow Road Milawa**. Guests will be entertained by Billie Taylor, a former Milawa Primary School student and will enjoy seasonal gourmet platters, rustic desserts, coffee, tea and cakes. There will be a fundraising raffle with **Lindenwarrah at Milawa accommodation, a handmade lampshade & cushions and gift hamper** up for grabs.

### Speaker Profiles:

#### Janelle Boynton

Janelle is a woman with many talents, hands on owner of their family business; Boynton's Feathertop Wines, she is also a highly regarded architect, dedicated community leader and mother of two young children. She was instrumental in the re-branding of the winery FEATHERTOP label after the 2003 bushfires achieving a \$300,000 turnaround from loss to profit making venture. Janelle will tell some of her story and provide practical tips and ideal how she maintains a healthy work life balance.

#### Julie Tyler

A resident of North East Victoria for the past 24 years with her husband of 32 years. She has three grown up daughters and has always been involved in the local community. She has worked for many years as a Health Promotion Officer at Woman's Health Goulburn Murray where she specialises in community engagement, facilitation and project management. Julie is passionate about creating connections between people and helping individuals and groups to realize their potential.

People often struggle to manage a healthy work life balance; juggling kids, work and community commitments. This is a great opportunity to hear and relate to two strong community leaders in a relaxed and friendly setting. Just taking one thing from speakers like this can make all the difference to your life!

**Tickets cost \$35 per person, for bookings please go to <https://trybooking.com/LKLK> and for more information please contact Milawa Primary School on 03 5727 3243 or email [Milawa.ps@edumail.vic.gov.au](mailto:Milawa.ps@edumail.vic.gov.au). For media enquiries please contact Elizabeth on 0417334205 or [Elizabeth@wineengineroom.com.au](mailto:Elizabeth@wineengineroom.com.au)**



**Plumbing, Excavations & Fire  
Service Contractors**

Commercial & Domestic . Storm Water  
Plumbing . Roofing  
. Gas Fitting . Fire Service Installations &  
. Tank & Pump Installation . Repairs  
. Excavation Works . Hydrant & Hose Reels  
. Excavation & Bobcat Hire . Sewer Works  
. Confined Space Works . Pipe Location  
. Fire Storage Tank Installations . Sanitary  
. Water Mains Repairs . Back Flow Prevention

**Mb 0428 639 157**

Licensed Plumber and Register Builder with over 20 years  
experience in the construction Industry  
Reg Builder CB-L 22921  
Plumbing Lic No 38468

**Free No Obligation Quotation  
All Insurance Coverage & OH&S**

**P O BOX 14 MOYHU 3732 VICTORIA  
[www.kendallplumbing.com.au](http://www.kendallplumbing.com.au)**

**F  
ORESTRY**

**M  
ANAGEMENT**

**S  
ERVICES**



**EARTHMOVING , VEGETATION  
MANGEMENT & WILDFIRE  
MINIMIZATION**

**PH steve: 0488981112  
john: 0400099219**



**KING VALLEY**  
**LEARNING EXCHANGE Inc. A0025713K**  
 2533 Wangaratta Whitfield Road  
 Moyhu 3732  
 all enquiries & Registration  
 Tel/Fax 5727 9548  
 Email: kvle@people.net.au

For



**Neighbourhood House**  
 The heart of our community



## PILATES IN MOYHU

### Pilates Mat classes for beginners

Thursdays 5.30pm at King Valley Learning Exchange

Thursday 19<sup>th</sup> May – 23<sup>rd</sup> June 2016

Introductory 6 week program \$90

Accredited Exercise Physiologist and Pilates Practitioner (APMA), Shelly Harper has been teaching Pilates for over 15 years. The Pilates Mat classes for beginners at Moyhu teaches you the fundamentals of Pilates before progressing to more advanced exercises.

By committing to the six week program you are giving yourself the best opportunity to develop a deeper understanding of your body and how it moves. Prior registration required. Mats supplied or BYO.

Understand the principles of Pilates, explore your mobility, strengthen your core

*Stand tall, move freely, be strong*

To book your place in this program contact Shelly on 0401 084 022

[shellyharper797@yahoo.com.au](mailto:shellyharper797@yahoo.com.au)



### APPLY FIRST AID (WORKPLACE LEVEL 2)

This course teaches the fundamental principles, knowledge and skills to enable the first aider to provide emergency care for injuries and illnesses, in the home or the workplace.

There are no prerequisites for this course.

This is part of the HLT07 National Training Package. It is particularly useful for those who want the qualification for the workplace or as part of another training package or certificate.

Friday & Monday  
 27<sup>th</sup> & 30<sup>th</sup> May  
 2016  
**APPLY FIRST  
 AID**  
 9am to 5pm



**CPR Update**  
 Friday 27<sup>th</sup>  
 May 2016  
 9am—1pm

### C.P.R.

This Cardiopulmonary Resuscitation (CPR) refresher course is designed to update the knowledge and skills necessary to maintain breathing and circulation in an adult, child or infant following cardiac arrest

*Develop the skills to make a real difference in someone's life.*

This nationally recognised CPR program will teach you the current techniques and methods which are required for those holding a First Aid Qualification. The knowledge you develop in this course can be applied across a range of industries including health, education, business and tourism sectors.